

*A program for the design of
Pacific Northwest residential gardens*

UBC Certificate in Garden Design

Program Handbook

Developed by



Continuing Studies

*in cooperation with
UBC Landscape Architecture
and the UBC Botanical Garden*

Contact Us

Certificate in Garden Design

The University of British Columbia

Continuing Studies

410-4950 University Boulevard

Vancouver, BC V6T 1Z3

Registration and Student Services

Tel: 604-822-1433

Fax: 604-822-0388

Email: garden.design.cert@cstudies.ubc.ca

Web: cstudies.ubc.ca/garden

This program handbook is current as of November 2009. Note that future editions of this program handbook may contain changes to program requirements and policies.

Copyright © 2009.

The University of British Columbia.

All rights reserved. Printed in Canada.

Contents

| | |
|--|-----------|
| Program Overview | 1 |
| Introduction..... | 1 |
| Program Benefits | 1 |
| Who Should Take This Program? | 2 |
| Location | 2 |
| Program History | 2 |
| Format and Curriculum..... | 3 |
| Program Format and Length..... | 3 |
| Curriculum..... | 3 |
| Changes to Curriculum | 6 |
| Instructors..... | 7 |
| Workload Expectations | 9 |
| Assessment Methods..... | 9 |
| Graduation Criteria | 9 |
| Program Admission Information | 10 |
| Admission Requirements..... | 10 |
| Application Process | 11 |
| Evaluation of Applications | 11 |
| Program Fees..... | 11 |
| Additional Program Information | 12 |
| Program Administration | 14 |
| Continuing Studies Administration..... | 14 |
| Advisory Committee..... | 15 |
| Application Form..... | 16 |

*“Give yourself a design
before you start working.”
Rosemary Verey, OBE*

Program Overview

Introduction

The UBC Certificate in Garden Design offers comprehensive and innovative instruction in the design of residential gardens in the Pacific Northwest. Developed in cooperation with prominent Vancouver landscape architect and garden designer Ron Rule, this unique program will appeal to keen amateur gardeners and professionals alike. This six-month, part-time offering explores — in depth and in logical sequence — all of the stylistic forms and techniques of good garden design. Participants receive practical and theoretical training in the history and theory of garden design, drafting, and hard and soft landscape design, along with the opportunity to apply this knowledge to the design of an actual case study garden.

The program is unique in that it is geared specifically to urban gardens; it is innovative because it focuses on exploring the design possibilities inherent in the Pacific Northwest region; it is unusual in its diverse and dedicated faculty of university instructors and distinguished regional experts practising in the field.

Program Benefits

The program serves as an effective starting point for amateurs wishing to enter the field. It also offers professional development for those working in related trades, such as horticulture practitioners and landscapers who are starting to design and need to increase in their knowledge base.

Who Should Take This Program?

- horticultural practitioners and those in the nursery trades seeking professional development
- landscapers who wish to provide more comprehensive and professional services to clients
- keen and committed amateur gardeners who want to make their own gardens more attractive and interesting
- those who are considering a career in landscape design
- landscape architecture students seeking a focus on garden design.

Location

Classes are held on the UBC Point Grey campus, utilizing the space and facilities of the Landscape Architecture program and the UBC Botanical Garden and Centre for Plant Research.

The Landscape Architecture building provides the main space for lectures and studio work.

The UBC Botanical Garden and Centre for Plant Research — renowned for its 110 acres planted with over 10,000 different trees, shrubs and flowers in a combination of natural and cultivated styles — is used as a “green classroom” to study plants, the aesthetics of native planting and maintenance topics.

Off-campus activities include visits to well-designed local residential gardens and the site of the designated case study garden.



Ron Rule, Director of the Garden Design Program, leading a garden tour

Program History

Launched in 1997, the UBC Certificate in Garden Design was developed in consultation with multiple program collaborators, including the UBC Botanical Garden, UBC Landscape Architecture, and award-winning garden designer Ron Rule. An advisory committee was responsible for reviewing the initial program proposal and advising on curriculum.

*“All gardening is a
landscape painting .”
William Kent*

Format and Curriculum

Program Format and Length

The UBC Certificate in Garden Design consists of approximately 154 hours of required courses (modules) plus assignments and a final project.

Participants must complete successfully all five modules to receive the certificate. The modules are taken over a six-month period and are designed to be taken sequentially. No module can be skipped and completed at a later date.

The certificate program is a “hands-and-eyes-on” experience and instructors employ a variety of techniques to convey their material. They will lecture, demonstrate, lead group activities both in the classroom and the field and oversee individual design projects. Students are required to participate in discussions and in the exchange of ideas, and to complete both individual and group projects. They are required to draft their own designs and experiment in the selection of construction materials and plants; feedback and evaluations are provided by peer and expert review. Each student will finish the program with a portfolio of examples of designs from the projects completed during the program.

Curriculum

Designed to accommodate the busy and demanding lives of the participants, the certificate program is divided into five modules presented in a logical sequence and taken over a six-month period. The program consists of evening and weekend classes as well as two, week-long intensives. Each module builds upon the previous one so that the knowledge and experience gained in each module informs subsequent learning.

Each year a different case study garden is assigned as an integral part of the program. This challenges students to come up with ideas for an existing site dealing with a variety of elevations, existing trees and major vegetation, automobile circulation and other important factors. Students will also have the opportunity to deal with a “real” client.

Students will gain practical experience drafting their own designs, experimenting in the selection of construction materials and plants, and receive ongoing feedback from an expert review panel. Concept boards will be used to show the emergence of an idea, which then forms the basis of outline plans. These boards will be developed further into scaled drawings. Students will become familiar with advanced graphic techniques such as isometric drawings and perspective sketches.

History and Theory of Garden Design

Certain physical features have come to characterize particular garden styles. In this slide-illustrated module, we isolate the major elements (both natural and human-made) of a variety of historically significant garden styles, from European to Asian. The theory behind these design styles, and behind garden design in general, is outlined and analyzed.

The history of garden design in the Pacific Northwest is relatively recent. We look at some of the more significant private gardens of the last 75 years in order to understand our emerging Northwest style.

(12 hours)

Drafting and Design Communication

The ability to envision, document and communicate information in graphic form is crucial to the design process. This module provides instruction in the plan-reading and drafting skills required to produce plans, elevations, sections, perspectives and a variety of other visualization tools used by the garden designer. Participants acquire the knowledge needed to translate existing field conditions onto paper in order to assess, analyze and develop a garden site.

(26 hours)



Student drafting project

Conceptual Garden Design

Whatever a garden's overall look, its creator has fashioned it — for better or worse — using certain design elements that can be identified. These elements are the designer's aesthetic tools, which he or she manipulates to the success or failure of the project. This week-long intensive design course focuses on the imaginative use of these discernible elements, among them colour, perspective and focal point, light and shadow. Participants study the role played by enclosure, circulation, elevational change and water in the development of an inviting scheme. During the week, students learn first-hand the challenges of the design process in developing their own design for the case study garden.

(39 hours)

The Hard Landscape: Design, Details and Construction

In a well-designed and constructed garden, hard surfaces are introduced to the site so that each material application is compatible with all others and in keeping with the overall scheme. These hard surfaces may include water features, stairs, patios, decks, fencing and retaining walls. They may be comprised of a variety of local materials including wood, metal, stone and concrete. In this module, students are introduced to local materials and construction issues. Students focus on the hard landscape elements of their case study design, develop design details and learn about other theoretical aspects of construction through lectures, tours and class assignments.

(42 hours)

The Soft Landscape: Design, Planting and Maintenance

A well-designed garden is more than a collection of plants, no matter how rare or unusual. In this module, participants explore the aesthetic properties of plants: how their scale, shape, texture, colour and mass can be used to great effect. Native planting and environmental concerns are addressed and students produce a planting plan for their case study garden. Plant maintenance is a vital component of this section with special emphasis on the aesthetics of maintenance — how specific techniques contribute to the character of particular styles of gardens and how maintenance concerns and plant ecology are

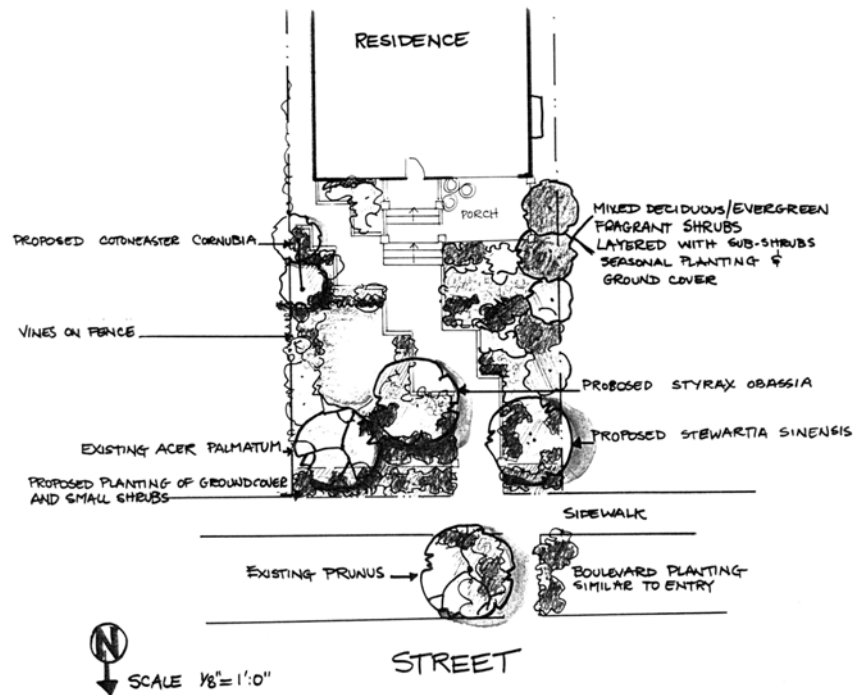


Instructor Douglas Justice discussing trees on a field trip

important aspects of planting design.

At the end of the week, students will re-evaluate and fine-tune their designs, and complete their course portfolio, which can consist of plans, sections, elevations, perspectives and sketches.

(35 hours)



Changes to Curriculum

The modules that make up the certificate program may change over time to reflect the changing needs of participants and the evolution of the program. To receive the UBC Certificate Garden Design, participants must complete the required curriculum and the number of instructional hours that are compulsory at the date they are admitted to the program. The most current information on the program requirements is posted on the program web site cstudies.ubc.ca/garden.

Instructors

RON RULE, principal designer and program director for this certificate, is a leading figure in the West Coast world of gardening and one of Canada's most recognized garden historians. He has a degree in Landscape Architecture from the University of Oregon, and has led numerous European and Pacific Northwest garden tours. He has created award-winning feature garden displays for the Seattle-based Northwest Flower and Garden Show, and worked with some of England's most well-known gardeners. In 2004, Ron was inducted into The Canadian Society of Landscape Architects' College of Fellows.

TONY O'REGAN is a designer and teacher with many years of experience in the field of design. He has had a major role in shaping numerous large-scale civic and institutional projects over the years while working with a major BC architectural firm. He also taught interior design for several years. Tony is an exhibiting artist and also teaches art and design related courses at Emily Carr Institute of Art and Design. A recent project involvement in China inspired him to study Urban Design. Tony is an honours graduate in painting and holds the degree of Master of Environmental Design (Architecture Specialty). His particular interest has been to help aspiring designers in many fields to develop the studio skills needed for design and visual representation.

DOUGLAS JUSTICE is the UBC Botanical Garden Associate Director and Curator of Collections. His primary responsibility is the day-to-day operation of the garden and interpretation of the plant collections. He is also involved with public and industry outreach, and teaches horticulture and plant identification courses for the Faculties of Land & Food Systems and Applied Sciences.

Prior to joining the Botanical Garden, Douglas taught horticulture at Kwantlen University College in Langley where he focused on plant identification, integrated pest management and nursery production. Douglas trained at Massot Nurseries (Richmond, BC) and has worked as a gardener in Vancouver and at Windsor Great Park, England.

Douglas is a founding member and past-president of the Native Plant Society of BC, a founding member and vice-president of the North American Branch of the Maple Society and is actively involved with a number of other local, national and international botanical and horticulture organizations. Douglas holds a Bachelor's Degree in Horticulture and a Master's Degree in Botany, both from UBC.

TERRY HARRISON holds a Bachelor of Architecture from the University of British Columbia. A past Architect with the Architectural Institute of British Columbia and now an Associate Architect, Terry worked for seven years in a large architectural firm on major commercial and institutional projects before leaving to start his own practice. He joined the Interior

Design program at Kwantlen College teaching courses with an emphasis on the technical side of the program (drafting, materials and construction). Later he brought that knowledge to courses he taught at Royal Oak College and the Art Institute of Vancouver. Terry has successfully run his private practice for more than 40 years, focusing on residential architecture and interior design.

JANE GREEN is a graduate of the UBC Masters of Landscape Architecture Program. After graduating, Jane worked for DMG Landscape Architects in Burnaby. While there she collaborated with local developers and architects on multi-family residential and commercial projects from design inception through completion. Jane is an Associate Member of the BC Society of Landscape Architects (BCSLA) and is also the editor of the BCSLA bi-monthly publication *Sitelines*.

CATHERINE MACDONALD is a graduate of the Ontario College of Art & Design and holds a BA (Fine Arts) and a Bachelor of Landscape Architecture from the University of Guelph. She has been a self-employed garden designer for the last ten years and is an ISA Certified Arborist. Prior to coming to BC in 1996 she acquired over 16 years' experience in project implementation, primarily in municipal urban forestry and residential design/build in Ontario. Catherine also writes and is a practised artist.

Other instructors may include local and international experts with long experience in the field such as:

SAM CARTER – a landscape architect, artist and instructor at Emily Carr Institute of Art & Design. Mr. Carter brings an international perspective to garden design.

GRACE GORDON-COLLINS – an architect and interior designer who shares her artistic passion by educating her clients.

VALERIE MURRAY – an artist renowned for her creative Victoria garden.



UBC Certificate in Garden Design students

Instructors may vary from year to year. The program also has a special affiliation with the Arthur Erickson House and Garden.

Workload Expectations

The UBC Certificate in Garden Design is intended to be a part-time program for working adults, or those with significant other responsibilities. To successfully complete each module, participants must attend at least 75% of the scheduled classes and actively participate in all classroom and program activities including discussions, exercises, assignments, projects and oral presentations; homework is necessary. Participants must successfully complete all project work and assignments set.

Assessment Methods

The UBC Certificate in Garden Design is a "competency-based" program in which participants are required to clearly demonstrate the acquisition of knowledge and key skills in each module before advancing to the next module.

Evaluation methods include observation and assessment of each participant's grasp of the information and techniques presented, and grading of assignments, projects and presentations.

Graduation Criteria

To graduate, participants must successfully complete all five required modules with a "pass" or "completion" in all modules or a grade no lower than 60% for projects and assignments that are numerically graded. Throughout the modules, each student is expected to complete graphic assignments, which may be compiled into a final portfolio.



Student design presentation.

“One of the many paradoxes in designing the small garden is that one must think rather boldly. Nothing should be meager or pinched, for then the space will become trivial, calling attention to its actual limits.”

Joe Eck

Program Admission Information

Admission Requirements

The UBC Certificate in Garden Design admission requirements are fairly broad in order to accommodate learners from diverse backgrounds. However, all applicants must meet the following requirements:

- general horticultural knowledge and familiarity with common westcoast trees, shrubs and ground-covers
- high-school graduation
- English language proficiency (a minimum of BC High School English or equivalent)
- regular access to a computer to complete assignments and projects
- internet access for research
- a current email account that is checked on a regular basis.

Applicants will ideally have some knowledge of drafting. UBC Continuing Studies offers an introductory course in Basic Drafting and Design each winter term. This course will be very helpful to anyone without previous drafting instruction.

Application Process

Applicants must read and thoroughly understand the Program Handbook before applying to the program.

The UBC Certificate in Garden Design has a formal admission procedure designed to ensure a match between participant goals and the program objectives, and allow for quality education and student support services.

The application deadline is identified on an annual basis. All applicants to the program must complete an application form and submit it with the required supporting documents to the address indicated. An application form is located at the end of this handbook and online at cstudies.ubc.ca/garden

Evaluation of Applications

A committee reviews the applications and applicants are advised as to whether they have been accepted into the program.

Applications are evaluated on the following criteria:

- compatibility of letter of intent with current program goals and objectives
- suitability of previous education and work experience
- previous gardening experience both professional or hobby.

Once the applications have been reviewed, applicants will be notified as to whether they have been accepted into the program.

Program Fees

For current fees and program schedule, view cstudies.ubc.ca/garden or call 604-822-1433.

Payment may be made in two equal installments. The first payment, which includes a \$750 non-refundable deposit, is payable upon acceptance into the program. Materials and textbooks are extra. There is no fee to submit an application form

Fees may be paid by Visa, MasterCard, debit card, cash or cheque. All fees in reference to certificate courses are exempt from GST. Fees are subject to change.

Additional Program Information

Limited Enrolment

A limited number of applicants are admitted to the Certificate in Garden Design program. Meeting minimum admission requirements does not ensure admittance to the program.

Availability of Program

Program availability varies from year to year, depending on demand and availability of resources to offer the program.

Prior Learning Assessment (PLA)

The certificate is intended to be a professional development program that builds upon the existing knowledge and experience of learners. Because the program is a cohort program based on cooperative learning principles, participants must take all the modules in the program. There are no exemptions from particular requirements within the program.

Length of Program

Participants must complete all requirements for graduation within the six-month duration of the program.

Withdrawal and Cancellation Policy

Withdrawing from the Program

The program fee includes a \$750 non-refundable deposit payable upon acceptance into the program. Once the program has started no refunds will be issued.

If participants withdraw from the program they must notify Continuing Studies in writing the justification for the withdrawal. Refunds (less the \$750 non-refundable deposit) may be considered for serious reasons such as bereavement or documented medical reasons (supported by a practicing medical physician of the British Columbia Medical Association).

Course Cancellations

UBC Continuing Studies may sometimes cancel programs due to insufficient enrolment or other reasons. If this occurs, a full refund is processed and mailed automatically. UBC Continuing Studies does not guarantee that a particular program/course will be offered at a particular time.

Academic Conduct

UBC Continuing Studies takes academic misconduct in the form of cheating and plagiarism seriously. Students found cheating or plagiarizing will be subject to penalties that may include dismissal from the program or course with a failing grade and no refund of tuition fees.

For additional information about cheating and plagiarism policies, please read the UBC policy on academic misconduct at www.vpacademic.ubc.ca/integrity/policies.htm.

Professional and Ethical Conduct

The special nature of our programs obligates UBC Continuing Studies to foster a learning environment that respects the diversity of individuals, but also applies standards and ethics in keeping with a professional, adult workplace. Our goal is to make programs a positive learning experience. Therefore students in our programs are expected to conduct themselves in accordance with professional standards of behaviour, respect and scholarly integrity. The ability to work respectfully in a team environment and specifically with other students, instructors and staff is essential.

In addition, the University administration may require a student to withdraw from the University at any time for unsatisfactory conduct, for failure to abide by regulations, for unsatisfactory progress in a program of studies or training, or for any other reason which is deemed to show that withdrawal is in the interests of the student and/or the University. In such cases there will be no refund of tuition.

UBC Appropriate Use of Information Technology

Participants must abide by the UBC Appropriate Use of Information Technology Guidelines. For details, see www.it.ubc.ca/internet/resnet/policies/appropriateuse.html.

Program Administration

Continuing Studies Administration

Don Black

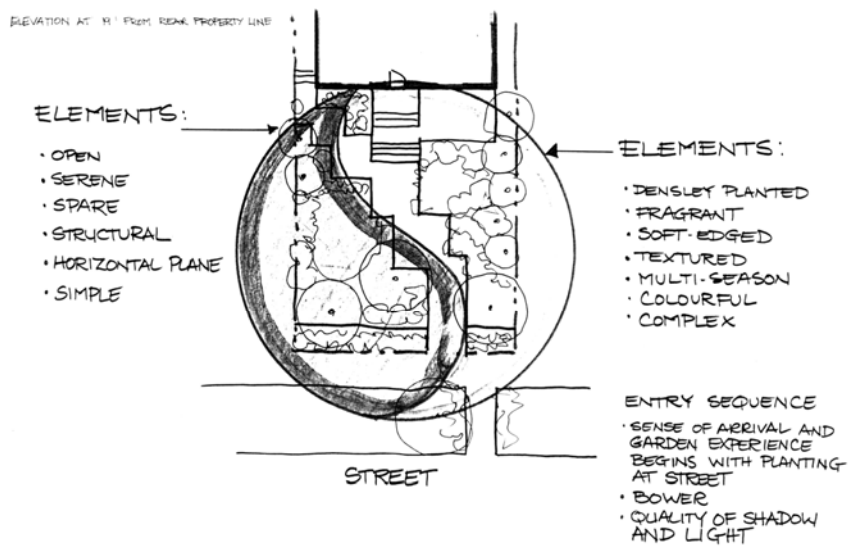
Director

Community Programs, UBC Continuing Studies

Glenys Tidy

Program Coordinator

Community Programs, UBC Continuing Studies



Advisory Committee

The UBC Certificate in Garden Design was developed in 1995/96 by UBC Continuing Studies and Ron Rule, with guidance from the original Garden Design Advisory Committee. The current Advisory Committee continues to provide direction for the Certificate in Garden Design and is composed of UBC educators, private sector representatives and program graduates.

Don Black

Director

UBC Continuing Studies

Cynthia Girling

Professor and Chair

School of Architecture and Landscape Architecture, UBC

Douglas Justice

Associate Director and Curator of Collections

UBC Botanical Garden and Centre for Plant Research

Kimberley Lowen

Garden Designer and Program Graduate

Catherine MacDonald

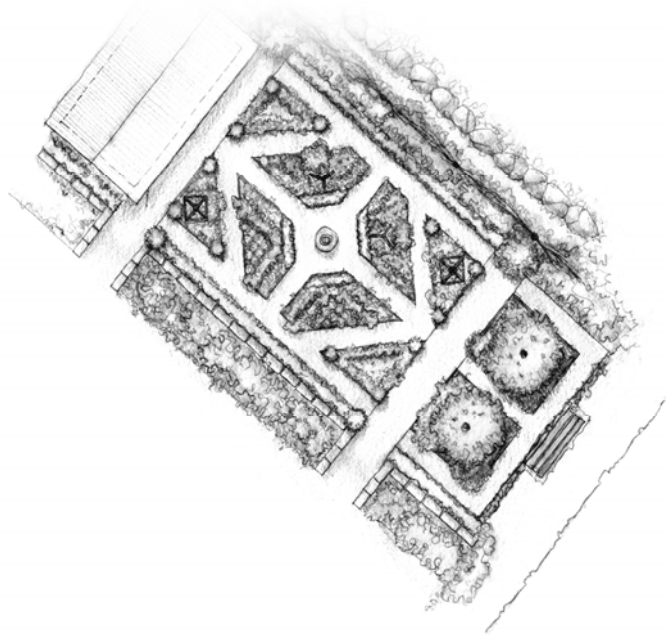
Garden Designer

Colleen MacDonald

Garden Designer and Program Graduate

Ron Rule

Landscape Architect



Application Form

Applicants **must read** and thoroughly understand the Program Handbook before applying to the UBC Certificate in Garden Design.

In addition to submitting this form, applicants must include a type-written Letter of Intent composed by the applicant that specifies his/her goals, interests and program expectations (see Letter of Intent).

| | |
|-----------|------------|
| Last Name | First Name |
|-----------|------------|

| |
|--------------|
| Home Address |
|--------------|

| | | |
|------|----------|-------------|
| City | Province | Postal Code |
|------|----------|-------------|

| | |
|---------------|---------------|
| Daytime Phone | Evening Phone |
|---------------|---------------|

| | |
|------|-------|
| Cell | Email |
|------|-------|

Educational Background

For this program, applicants should have completed Grade 12 (or the equivalent).

List all degrees, diplomas, certificates, and other formal or informal courses of study that you consider relevant to your application. You may be requested to supply a copy of your transcripts.

| | | |
|----------------------------|-------------|----------------|
| Degree/Diploma/Certificate | Institution | Year Completed |
|----------------------------|-------------|----------------|

| | | |
|----------------------------|-------------|----------------|
| Degree/Diploma/Certificate | Institution | Year Completed |
|----------------------------|-------------|----------------|

| | | |
|----------------------------|-------------|----------------|
| Degree/Diploma/Certificate | Institution | Year Completed |
|----------------------------|-------------|----------------|

Related Work and Volunteer Experience

Please give details about any work or volunteer (for yourself or others) experience that you consider relevant to the program. Include the nature of the activity, the name of the company or agency with which you were associated, and the number of months or years of service. You may attach a résumé with these details if preferred.

| Nature of Activity | Company/Organization | Months/Years |
|--------------------|----------------------|--------------|
| | | |

Letter of Intent

In a word-processed letter submitted with this application, define your interests, program expectations and the goals you expect to achieve upon completion of the UBC Certificate in Garden Design (300-500 words). Also include in your letter of intent, a list of five garden books, magazines, journals or web sites you have found influential.

How did you find out about this program?

- UBC Continuing Studies calendar UBC Continuing Studies web site
 Garden Design flyer Word of mouth/program participant
 Other (please specify): _____

This form, letter of intent and any supporting documents should be sent to:



Certificate in Garden Design
 UBC Continuing Studies
 410-5950 University Blvd Tel: 604-822-1433
 Vancouver, BC Fax: 604-822-0388
 Canada V6T 1Z3 Email: garden.design.cert@cstudies.ubc.ca

Personal information provided on the registration form is collected pursuant to section 26 of the Freedom of Information and Protection of Privacy Act ("FIPPA"), RSBC 1996, c.165, as amended. The information will be used for the purposes of: admission; registration; academic progress; notification of future courses; and operating other UBC-related programs. UBC collects, uses, retains and discloses information in accordance with FIPPA. UBC may share and disclose personal information within the University to carry out its mandate and operations. Information, in aggregate form only, may also be used for research purposes and statistics. Should you have any questions about the collection of information, please contact Manager, Marketing Services, UBC Continuing Studies, 410-5950 University Boulevard, Vancouver, BC, V6T 1Z3.

We respect your privacy. Your contact information is used to send you communications regarding upcoming UBC courses and events that may be of interest to you. Your contact information will not be released to others. If you check these boxes you will still receive communications relating to the administration of your course or program.

Please check here if you do not wish to be on our:

- mailing list (if checked, you will not be mailed our course calendar) email list.